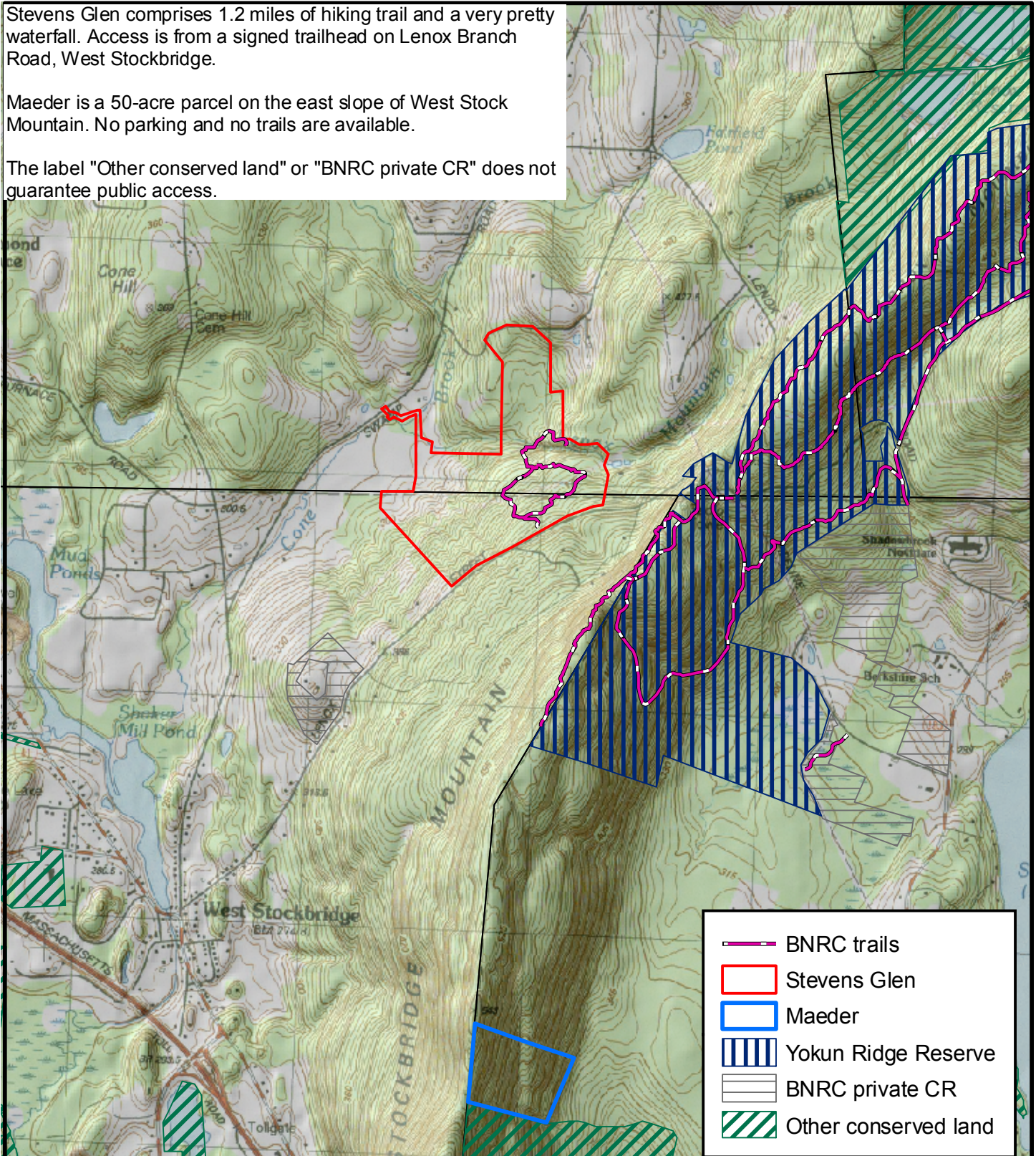


Stevens Glen comprises 1.2 miles of hiking trail and a very pretty waterfall. Access is from a signed trailhead on Lenox Branch Road, West Stockbridge.

Maeder is a 50-acre parcel on the east slope of West Stock Mountain. No parking and no trails are available.

The label "Other conserved land" or "BNRC private CR" does not guarantee public access.



1:24,000 Stevens Glen, 129 acres, Richmond/West Stockbridge
 Mass State Plane Projection Maeder, 50 acres, Stockbridge

© Berkshire Natural Resources Council 2016
 Data from Mass GIS and BNRC

