

# Thomas & Palmer Brook

The 219 acres of the Thomas and Palmer Brook reserve slope upward from the brook through old pasture, a wetland and mature forest to a dramatic high point of exposed bedrock. An accessible trail through the meadow leads into the forest and winds past boulders and large sugar maple trees. A habitat restoration project removed invasive species in the apple orchard and surrounding area.

.....

**Directions:** Parking area is located between 301 and 309 State Road (Route 23) in Great Barrington. Across from the Koi Restaurant.

GPS: 42.1955, -73.3370 (trailhead parking)



Photo: Gabrielle K. Murphy

## WELCOME! WE INVITE YOU TO...

**ENJOY** this property on foot, skis, or snowshoes. Dogs are welcome. They must be under your immediate control and local leash laws apply. Hunting and fishing are permitted, subject to MA state regulations. No motorized vehicles are allowed.

**PROTECT** the trails, wildlife, and land. Carry out what you bring in, take only photos, and leave everything else just as you found it.

**APPRECIATE** that this land provides a home, food, and shelter to wildlife and protection for clean drinking water. Respect wildlife and keep your distance.

**BE A LANDKEEPER.** Please visit [BNRC.org](http://BNRC.org) or call (413) 499-0596 for more information about this property, to learn about upcoming free guided walks and events here and around the Berkshires, and to support BNRC in preserving this beautiful landscape.

**TAG US** now on Instagram and Facebook with #landkeepers and #bnrc.

**SUPPORT** this work at [bnrc.org/donate](http://bnrc.org/donate).

## FOLLOW US

@BerkshireLandkeepers



**FIND** our app in the app stores by searching for "BNRC trails."



20 Bank Row | Pittsfield MA 01201 | 413 499 0596  
[bnrc.org](http://bnrc.org)

# Thomas & Palmer Brook

Great Barrington



**BERKSHIRE**  
Natural Resources Council

**THE LANDKEEPERS**

# THOMAS & PALMER BROOK



## Trail Description:

Trail: 0.5 miles, round-trip

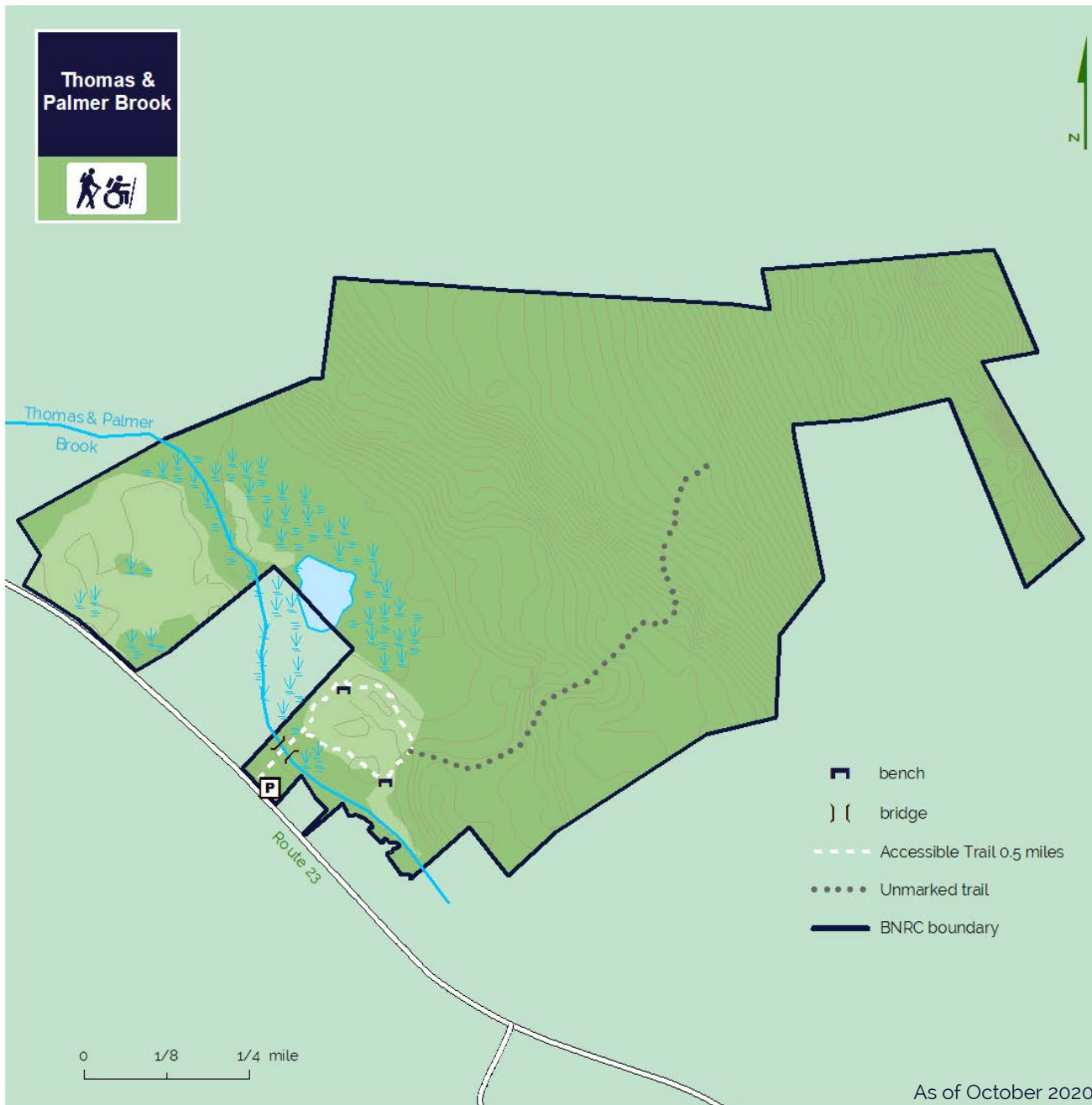
Difficulty: Accessible

From the trailhead, the path crosses the bridge that spans **Thomas and Palmer Brook**. The trail descends into a meadow where hikers can choose which direction to take on the loop trail. Heading counter-clockwise the trail winds you along the woodland edge and through the forest. It continues around a knoll that is an old apple orchard. On the westerly side of the knoll the path crosses between two large sugar maples and two large boulders before emerging back into the meadow. Along the way enjoy multiple places to rest and take in the expansive view of the wetland complex. An unmarked wood road connects to the east side of the accessible trail and winds you through the upland forest.

*The Thomas & Palmer Brook trail was designed and constructed by Peter S. Jensen & Associates, LLC.*

## Natural History:

The old pasture is now dense with pollinator loving goldenrod and milkweed. The forest consists of mixed hardwoods, white pine and hemlock. Beaver activity is visible near the brook. Birds that have been attracted by the property's diverse habitats include the American woodcock, the blue-winged warbler, the chestnut-sided warbler, the eastern towhee and the purple finch. The Thomas and Palmer Brook corridor has been identified as core habitat by Natural Heritage, meaning it is a habitat that could have rare, vulnerable, or uncommon mammal, bird, reptile, amphibian, fish, invertebrate, and plant species.



**Accessibility Details:** The Thomas & Palmer Brook Trail was designed and built in 2020 to U.S. Forest Service Trail Accessibility Standards. The trail is approximately 0.5-mile of 6-foot-wide crushed stone surfacing with a running slope not exceeding 8 % and cross slope not exceeding 5%. There is spur to a bench and viewing area overlooking a wetland.